



RECP #: 752624

RECORDED 5/8/2019 AT 1:09 PM BK# 2620 PG# 1666
Debra K. Lee, CLERK OF LARAMIE COUNTY, WY PAGE 1 OF 1

STATE OF WYOMING CORNER RECORD

(In compliance with the CORNER PERPETUATION AND FILING ACT, Wyoming Statutes, 1997 Section 33-29-140, et. seq., and the Rules and Regulations of the Board of Registrations for Professional Engineers and Professional Land Surveyors)

NORTHEAST CORNER SECTION 4, T. 18 N., R. 62 W., 6TH P.M., LARAMIE COUNTY, WYOMING

GLO: SET A GRANITE STONE 18X10X8, 12IN. DEEP WITH 3 MARKS ON THE EAST AND WEST EDGES FOR CORNER TO SECTIONS 3, 4, 33 AND 34.

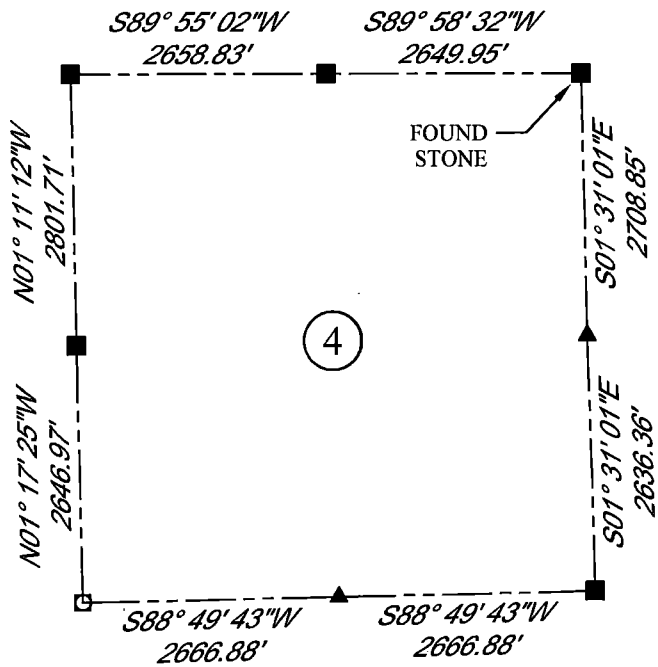
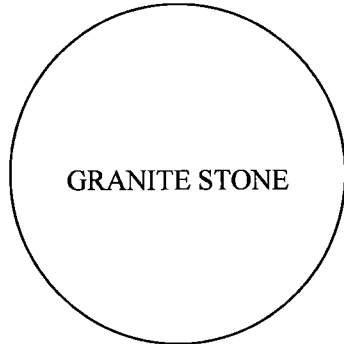
FOUND: FOUND A GRANITE STONE APPROX. 13X11X6, ON SIDE, NOT SET, WITH 2-3 VISIBLE NOTCHES ON 2 SIDES OF THE STONE. UNDER THE STONE IS A NAIL SPIKE WITH FLAGGING.



SCALE: NONE
NORTH DETERMINED BY
G.P.S OBSERVATIONS

FOUND GRANITE STONE WITH
NAIL SPIKE AND FLAGGING

SET NOTHING



LEGEND:

- FOUND BLM CAP
- FOUND USFS CAP
- FOUND STONE
- FOUND PRIVATE MONUMENT
- ◆ CALCULATED POSITION
- ▲ SET MONUMENT (LS10245)
- SECTION LINE

DATE OF FIELD WORK: 9/8/2018 OFFICE REFERENCE: MERIDEN

CROSS INDEX DIAGRAM

	1	2	3	4	5	6	7	8	9	10	11	12	13	14	15	16	17	18	19	20	21	22	23	24	25
A																									
B																									
C																									
D																									
E																									
F																									
G																									
H																									
J																									
K																									
L																									
M																									
N																									
O																									
P																									
Q																									
R																									
S																									
T																									
U																									
V																									
W																									
X																									
Y																									
Z																									

WOOD
2615 AVIATION DRIVE
SHERIDAN, WY 82801
PH: 307-675-6400



THIS CORNER RECORD WAS
PREPARED BY ME OR UNDER
MY DIRECTION AND
SUPERVISION,
SEAL AND SIGNATURE

